



Etched & Threaded Collection

Exclusively for Interface
by David Oakey Designs

E610 - E616

Interface[®]





EN

Made to zone-in or zen-out.

Need to focus your mind, or just let it wander? Meet Etched & Threaded, designed to bring a bit more zen to your spaces.

By weaving the warmth of luxury textiles with the geometric flow of natural stone – Etched & Threaded cuts through the hustle and bustle to create relaxing spaces you can truly sink into; with carpet tiles packed full of sustainable thinking and made to last.

From bustling breakouts to the boardroom – mix and match organic and woven patterns – available in a range of subtle colourways and modular tile shapes – to create the spaces that help you zone in or find your 'zen'.

FR

Conçue pour se concentrer et se détendre.

Besoin de vous concentrer ou de vous évader ? Voici Etched & Threaded, conçue pour apporter un peu plus de zen à vos espaces.

Cette collection associe la chaleur des textiles à l'aspect géométrique de la pierre naturelle grâce à une technique de tissage. Etched & Threaded annule le bruit et l'agitation pour créer des espaces relaxants. Ces dalles de moquette ont aussi été conçues pour respecter l'environnement, tout en garantissant de grandes performances.

Des salles de réunions animées aux salles de conférence, mélangez et associez des motifs tissés et organiques - disponibles dans des coloris subtils et des formats variés - pour créer des espaces propices à la concentration ou aux moments 'zen'.

DE

In sich gehen und sein Zen finden.

Sie möchten Ihre Gedanken fokussieren oder sie einfach nur schweifen lassen? Lernen Sie die Kollektion Etched & Threaded kennen, die Ihren Räumlichkeiten mehr Zen verleiht.

Die Wärme luxuriöser Textilien verbindet sich in Etched & Threaded mit dem geometrischen Fluss von Naturstein. So schafft die Kollektion entspannende sowie konzentrationsfördernde Räume, die Rückzug und Erholung ermöglichen. Entdecken Sie unsere Teppichfliesendesigns, die für Nachhaltigkeit und Langlebigkeit stehen.

Von belebten Pausenbereichen bis hin zum Meetingraum: Kombinieren Sie organische Designs mit Web-Mustern in dezenten Farben und verschiedenen Formaten, um Räume zu schaffen, die Ihnen helfen, sich zu fokussieren oder zur Ruhe zu kommen.



NL

Gemaakt om je te concentreren of helemaal zen te worden.

Moet je je concentreren of wil je gewoon in je gedachten verdwalen? Maak kennis met Etched & Threaded, ontworpen om je ruimtes wat meer zen te geven.

Door de warmte van luxetextiel samen te weven met de geometrische flow van natuursteen, doorbreekt Etched & Threaded de drukte om ontspannende ruimtes te creëren waar je je in kunt onderdompelen; met tapijttegels die tot stand komen vanuit duurzaam denken en gemaakt zijn om lang mee te gaan.

Van bruisende pauzeruimtes tot de directiekamer - Mix en match organische en gewoven patronen - beschikbaar in een reeks met subtiële kleuren en modulaire tegelvormen - om de ruimtes te creëren die je helpen focussen of je helpen je 'zen' te vinden.

ES

Hecho para concentrarte o relajarte.

¿Necesitas centrar tu mente o simplemente dejarla deambular?

Conoce Etched & Threaded, diseñado para aportar un poco más de "zen" a tus espacios. Al realzar la calidez de los tejidos de lujo con el flujo geométrico de la piedra natural, Etched & Threaded reduce el ajetreo y el bullicio para crear espacios relajantes en los que realmente puedes sumergirte, con losetas modulares repletas de pensamiento sostenible y hechas para durar.

Desde animados grupos de trabajo hasta la sala de reuniones, mezcla y combina patrones orgánicos. Disponible en una gama de combinaciones de colores sutiles y formas de losetas modulares, para crear los espacios que te ayudarán a concentrarte o a encontrar tu "zen"

SE

Gjord för att ge dig din zen zone.

Behöver du stilla ditt sinne och bara låta tankarna vandra? Möt Etched & Threaded, designad för att föra in lite mer zen i dina utrymmen.

Genom att väva samman kvalitén från lyxiga textilier med geometriska designelement dämpar Etched & Threaded ljud och skapar rofyllda utrymmen som du verkligen koppla av i. Ett textiltäckande genom hållbart tänkande och tillverkade för att hålla länge.

Från lounge till styrelserum – blanda och matcha organiska mönster, tillgängliga i flera subtila färgnyanser och former för att skapa utrymmen som hjälper dig att hitta din "zen".



PRODUCT E611 COLOUR GRANITE INSTALLED MONOLITHIC



PRODUCT E612 COLOUR UMBER
PRODUCT E613 COLOUR UMBER INSTALLED ASHLAR



PRODUCT E612 COLOUR WHEAT
PRODUCT E613 COLOUR WHEAT INSTALLED ASHLAR

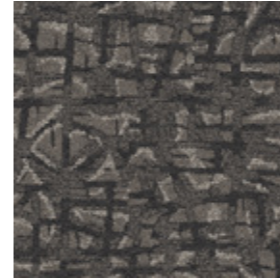


PRODUCT E616 COLOUR JUTE INSTALLED ASHLAR

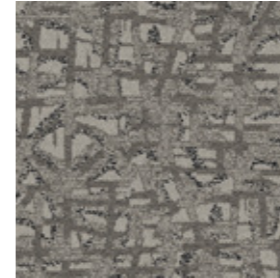


PRODUCT E610 COLOUR FELDSPAR INSTALLED MONOLITHIC

E610 Colour Range



600Q001 SLATE



600Q002 FELDSPAR



600Q003 SANDSTONE

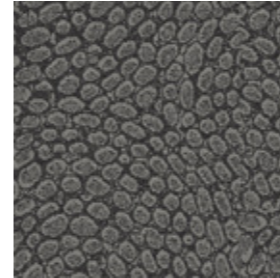


600Q004 YELLOWSTONE

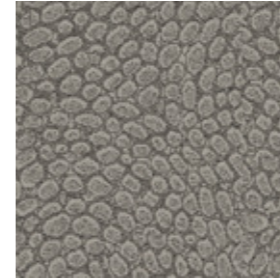


PRODUCT E611 COLOUR GRANITE INSTALLED MONOLITHIC

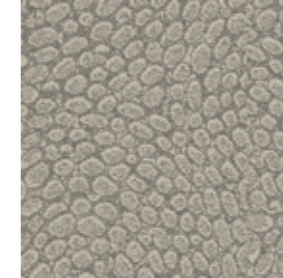
E611 Colour Range



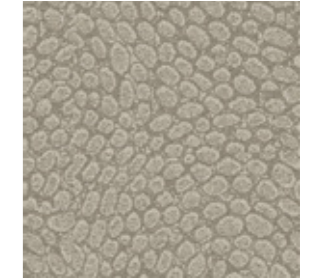
600R001 GRANITE



600R002 QUARTZ



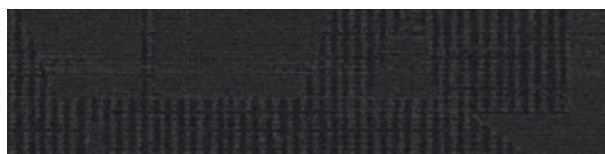
600R003 MARBLE



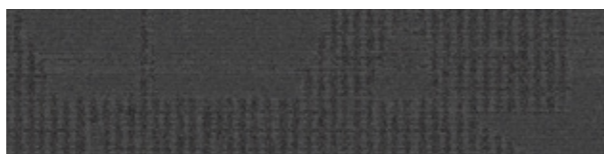
600R004 LIMESTONE



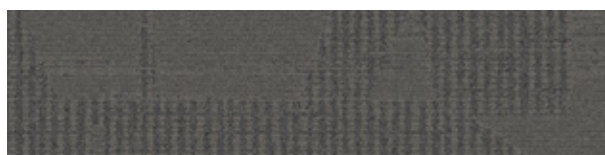
E612 Colour Range



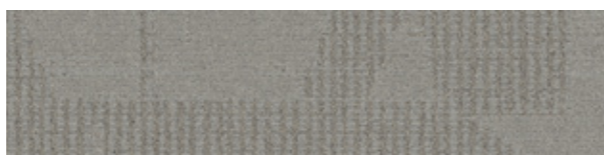
600S001 UMBER



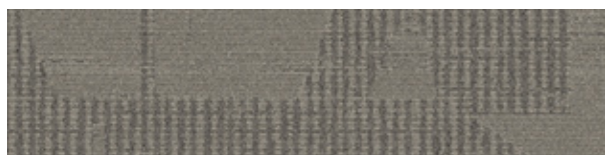
600S002 MINERAL



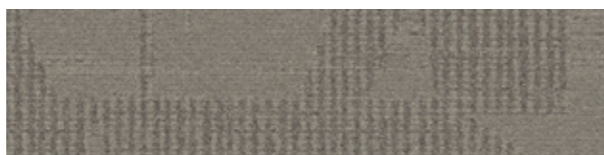
600S003 FLANNEL



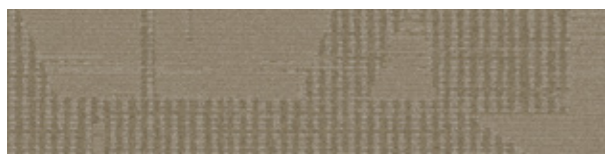
600S004 FOG



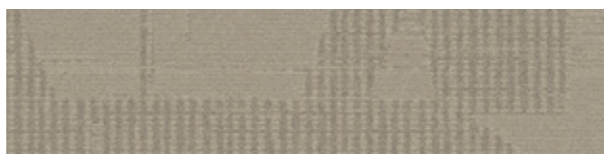
600S005 DUSK



600S006 SEPIA



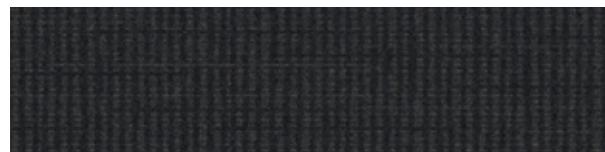
600S007 STRAW



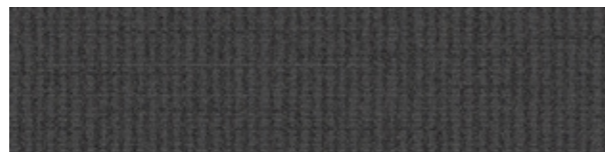
600S008 WHEAT



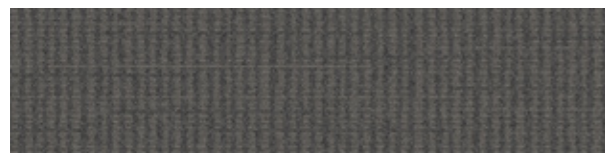
E613 Colour Range



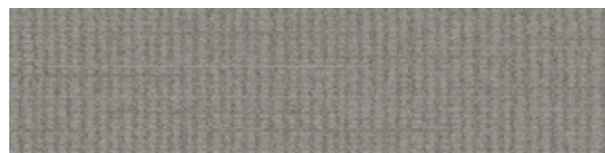
600T001 UMBER



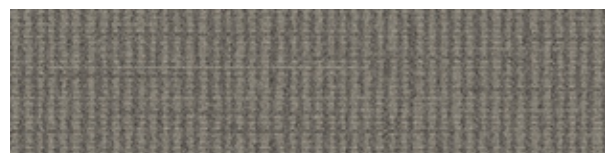
600T002 MINERAL



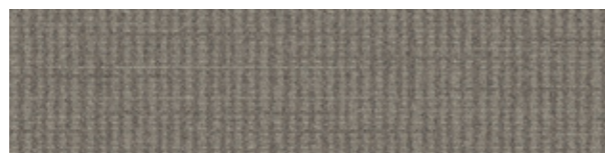
600T003 FLANNEL



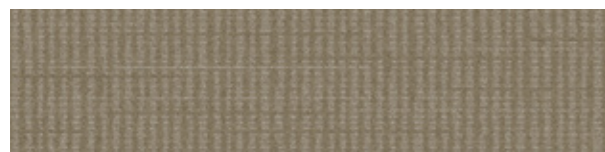
600T004 FOG



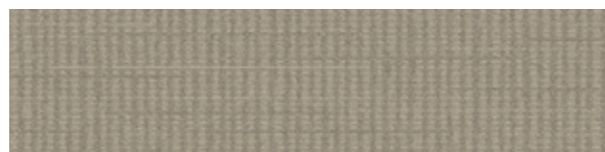
600T005 DUSK



600T006 SEPIA



600T007 STRAW

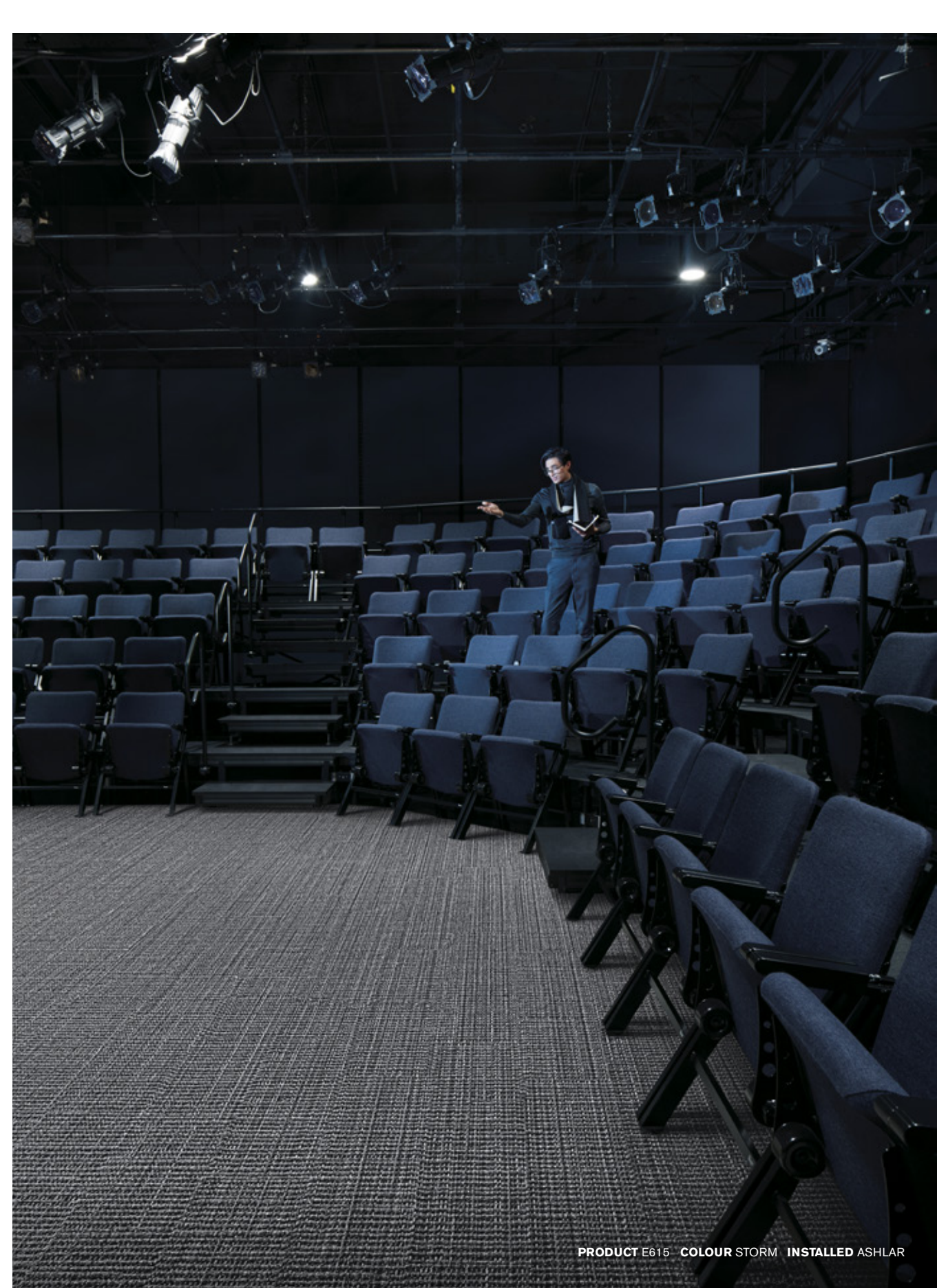


600T008 WHEAT





PRODUCT E616 COLOUR PLATINUM & PEWTER INSTALLED ASHLAR



PRODUCT E615 COLOUR STORM INSTALLED ASHLAR



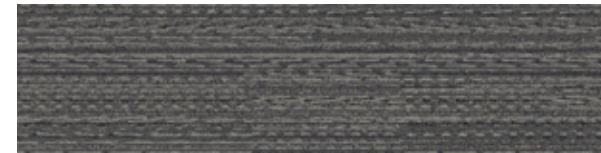
E614 Colour Range



600U001 BARK



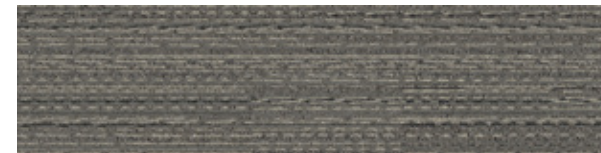
600U002 CHARCOAL



600U003 STORM



600U004 CONCRETE



600U005 BIRCH



600U006 BROWNSTONE



600U007 RAFFIA

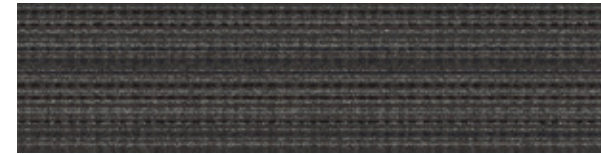


600U008 LINEN

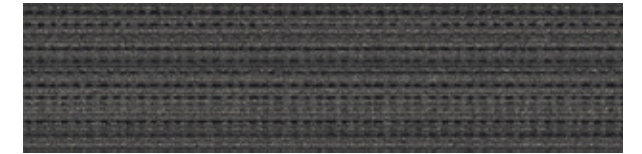


PRODUCT E615 COLOUR BROWNSTONE INSTALLED ASHLAR

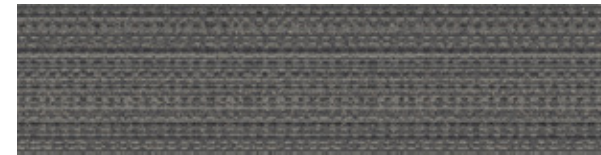
E615 Colour Range



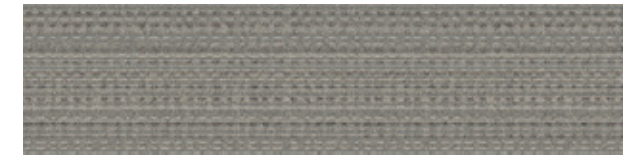
600V001 BARK



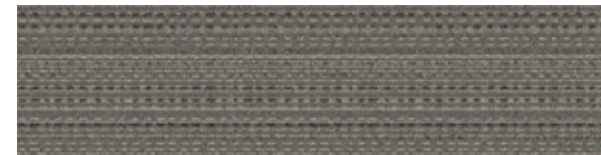
600V002 CHARCOAL



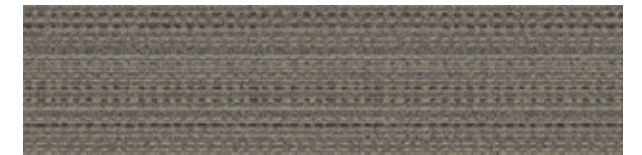
600V003 STORM



600V004 CONCRETE



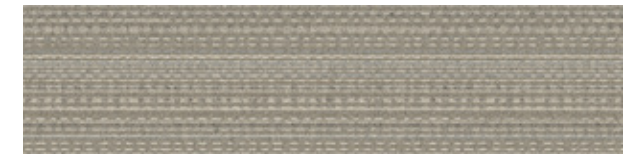
600V005 BIRCH



600V006 BROWNSTONE



600V007 RAFFIA



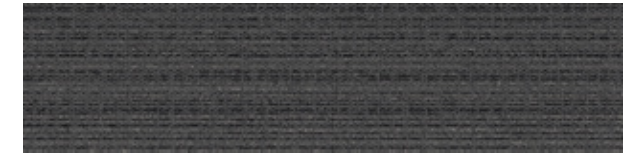
600V008 LINEN



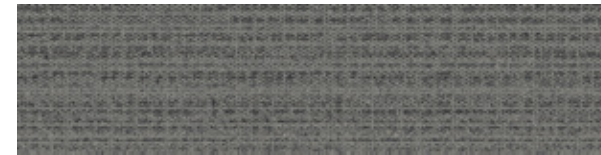
E616 Colour Range



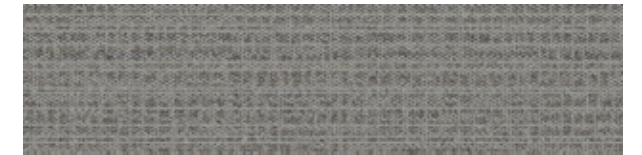
600W001 WALNUT



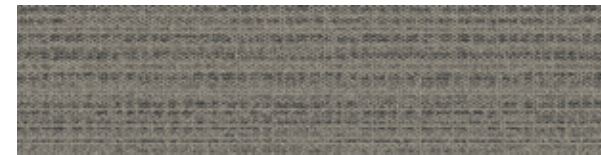
600W002 IRON



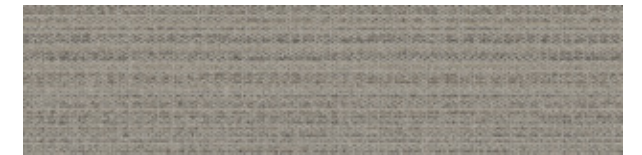
600W003 PEWTER



600W004 PLATINUM



600W005 TIMBER



600W006 WINTER



600W007 JUTE



600W008 PARCHMENT



- 1- Reception
- Lab/Diagnostics
- Cafe

2- Intensive Care Unit

3- Outpatient Surgery

4- Family Medicine

Carbon Footprint / m² (Cradle to Gate)

E610	5.10 kg CO ₂
E611	4.06 kg CO ₂
E612	3.53 kg CO ₂
E613	3.22 kg CO ₂
E614	3.53 kg CO ₂
E615	3.33 kg CO ₂
E616	2.69 kg CO ₂

Total Recycled and Bio-Based Content

E610	91.6%
E611	92.9%
E612	94.1%
E613	91.9%
E614	92.0%
E615	92.0%
E616	91.3%

Total Virgin Content (non recycled and non bio-based)

E610	8.4%
E611	7.1%
E612	5.9%
E613	8.1%
E614	8.0%
E615	8.0%
E616	8.7%

Yarn Recycled Content

100%

Installation Waste

Monolithic Installation	3-4%
Ashlar & Herringbone Installation	3-5%

Potential Green Building Contribution

See contributions for each at [interface.com](https://www.interface.com)



Sustainability - Etched & Threaded Collection

Standard Backing CQuest™Bio

CQUEST™BIO

Backing

EN

CQuest™Bio is non-vinyl, non-bitumen made with a bio-composite, containing bio-based and recycled fillers. These materials, when measured on a standalone basis are net carbon negative.

DE

CQuest™Bio ist eine PVC- und bitumenfreie Rückenkonstruktion, in der biobasierte und recycelte Füllstoffe verwendet werden. Einige der darin enthaltenen Materialien sind für sich betrachtet netto CO₂-negativ und reduzieren unseren CO₂-Fußabdruck maßgeblich.

FR

CQuest™Bio est notre nouvelle sous-couche pour dalles de moquette, sans PVC et sans bitume. Elle est fabriquée avec un bio-composite, mélange de matériaux bio-sourcés et recyclés au bilan carbone net négatif.

NL

CQuest™Bio is onze nieuwe vinylvrije, niet-bitumen tapijttegelbacking gemaakt van een bio-composiet met biobased en gerecyclede vulstoffen. Deze materialen, gemeten op een stand-alone basis, zijn netto CO₂-negatief.

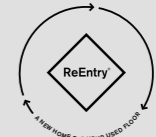
ES

CQuest™Bio no contiene vinilo ni bitumen. Está fabricado con compuestos bio y rellenos orgánicos y reciclados. Estos materiales son negativos en emisiones de carbono.

SE

CQuest™Bio är vår nya baksida för textilplattor. Den innehåller varken vinyl eller bitumen utan är tillverkad av biokomposit som innehåller biobaserade och återvunna fyllnadsmaterial. Detta gör CQuest™Bio netto koldioxidnegativ.

ReEntry®



EN

Interface promises to take back our customers used flooring product (carpet tile, LVT and Rubber) and create further value with them in the most sustainable way.

DE

Wir geben Ihnen das Versprechen, Ihre gebrauchten Interface-Bodenbeläge zurückzunehmen und damit einen Mehrwert auf nachhaltigste Art und Weise zu schaffen.

FR

Interface s'engage à reprendre les revêtements de sol usagés de ses clients et à leur donner une deuxième vie de la façon la plus éco-responsable possible.

NL

Interface belooft onze gebruikte vloerproducten van klanten terug te nemen en creëert daarmee meerwaarde in de meest duurzame manier.

ES

Interface se compromete a (moqueta modular, LVT y caucho) recuperar los pavimentos usados de nuestros clientes y crear valor a partir de ellos de la forma más sostenible.

Performance - Etched & Threaded Collection

Wear Classification

Class 33 Heavy Contract

Impact Sound Insulation ΔL_w EN ISO 10140-3

E616 | 23 dB | E610 E611 | 25 dB | E612 E613 E614 E615 | 27 dB

Rating of Sound Absorption EN ISO 11654

α_w 0.20

Certifications



For more information and to see contributions for each visit interface.com

Light Values

Product	Colour No	Colour Name	L Value*	Y Value*
E610	600Q001	Slate	36.8	9.4
	600Q002	Feldspar	51.1	19.4
	600Q003	Sandstone	59.5	27.5
	600Q004	Yellowstone	62.0	30.4
E611	600R001	Granite	40.8	11.8
	600R002	Quartz	52.8	20.9
	600R003	Marble	60.1	28.3
	600R004	Limestone	62.4	30.9
E612	600S001	Umber	24.7	4.3
	600S002	Mineral	31.5	6.9
	600S003	Flannel	38.8	10.6
	600S004	Fog	54.4	22.4
	600S005	Dusk	46.3	17.2
	600S006	Sepia	48.5	17.2
	600S007	Straw	52.9	21.0
	600S008	Wheat	58.4	26.4
E613	600T001	Umber	23.3	3.9
	600T002	Mineral	30.2	6.3
	600T003	Flannel	37.8	10.0
	600T004	Fog	52.9	21.0
	600T005	Dusk	45.8	15.1
	600T006	Sepia	47.7	16.6
	600T007	Straw	52.4	20.5
	600T008	Wheat	57.8	25.7
E614	600U001	Bark	29.6	6.1
	600U002	Charcoal	32.2	7.2
	600U003	Storm	39.0	10.7
	600U004	Concrete	53.3	21.3
	600U005	Birch	45.4	14.8
	600U006	Brownstone	45.0	14.5
	600U007	Raffia	53.9	21.9
	600U008	Linen	57.6	25.6
E615	600V001	Bark	30.2	6.3
	600V002	Charcoal	32.0	7.1
	600V003	Storm	38.9	10.6
	600V004	Concrete	52.8	20.9
	600V005	Birch	44.5	14.2
	600V006	Brownstone	44.4	14.1
	600V007	Raffia	53.5	21.5
	600V008	Linen	57.8	25.7
E616	600W001	Walnut	34.8	8.4
	600W002	Iron	31.6	6.9
	600W003	Pewter	42.6	12.9
	600W004	Platinum	49.9	18.4
	600W005	Timber	46.6	15.7
	600W006	Winter	55.4	23.3
	600W007	Jute	56.2	24.2
	600W008	Parchment	60.3	28.4

* **Light Value:** L Value = L according to CIE L*a*b* colour space, Y Value = Light Reflectance Value according to BS 8493

Lichtreflexionswerte: L-Wert = L gemäß CIE L*a*b* Farbspektrum, Y-Wert = Lichtreflexionswert gemäß British Standard BS 8493

Valores de Reflectancia de Luz: Valor L = L según CIE L*a*b* espacio de Color, Valor Y = Valor de reflectancia de luz según el estándar británico BS 8493

Valeurs concernant la lumière: Valeur L = L faisant référence à la méthode CIE L*a*b* pour la couleur, Valeur Y = Valeurs de réflectance de la lumière selon le British Standard BS 8493

Licht waarden: L Waarde = L volgens CIE L*a*b*kleurruimte, Y Waarde = Licht Reflectie Waarde volgens BS 8493

Indici di riflettanza alla luce: Indice L = L secondo CIE L*a*b* colour space, Indice Y = Indice di riflettanza alla luce secondo la norma BS 8493

Technical Specifications













E614




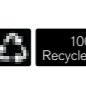

Product Definition	Tufted Patterned Structured Loop Pile	
Konstruktion	Tuftgemusterte strukturierte Schlingenqualität	
Descripción	Moqueta modular tufting bucle estructurado con diseño	
Description	Dalle de moquette à velours tufté bouclé structuré à motifs	
Type	Getufte gedessineerde gestructureerde bouclé	
Descrizione	Bouclé tufted strutturato	
Pile Material	100% Recycled Solution Dyed Nylon	
Polfasermaterial	100% recyceltes Polyamid garnefärbt	
Composición Fibra	100% Poliamida reciclada tintada en masa	
Composition	Polyamide 100% recyclé teint en masse	
Poolmateriaal	100% Solution Dyed Gerecycled Polyamide	
Fibra	100% Poliammide tinta in massa riciclata	
Pile Yarn Weight / Poleinsatzgewicht / Peso Fibra / Poids de fibre / Poolinzetgewicht / Peso Felpa	882 g/m ² ± 5%	
Total Weight / Gesamtgewicht / Peso Total / Poids total / Totaalgewicht / Peso Totale	4109 g/m ² ± 5%	
Pile Height / Polschichtdicke / Altura Fibra / Hauteur de la fibre / Poolhoogte / Altezza Felpa	5.4 mm + 15% / - 10%	
Total Thickness / Gesamtdicke / Espesor Total / Epaisseur totale / Totale dikte / Altezza Totale	8.6 mm ± 0.5 mm	
Gauge/Ends 10 cm / Teilung x 10 cm / Galga x10 cm / Gauge-Rangs par 10 cm / Rijen per 10 cm / Serraggio x 10 cm	1/10 – 39.4	
Tufts per m² / Noppenzahl/m ² / Puntadas m ² / Densité du tuft par m ² / Aantal noppen per m ² / Densità Punti	176,064 ± 5%	
Backing Type / Rückenkonstruktion / Soporte / Sous-couche / Ruguitvoering / Sottofondo	CQuest™Bio	
Wear Classification / Beanspruchungsklasse / Clasificación al tráfico / Classement d'usage et de confort / Gebruiksintensiteit / Resistenza all'usura	Heavy Contract (EN 1307) Class 33 / LC3	

Radiant Panel /Schwerentflammbarkeit / Clasificación Al Fuego / Classement feu / De Radiant Panel Test / Valutazione delle proprietà ignifughe	(EN ISO 9239-1) Euroclass Bfl s1 (EN 13501-1)
Dimensional Stability / Dimensionsstabilität / Estabilidad Dimensional / Stabilité dimensionnelle / Dimensionele stabiliteit / Test Stabilità dimensionale	≤ 0.2% (EN 986)
Impact Sound Insulation (ΔL_w) / Trittschallverbesserungsmaß / Impacto Aislamiento Acústico / Réduction du bruit d'impact /Contactgeluid absorptie / Isolamento all'impatto acustico	27 dB (EN ISO 10140-3)
Rating of Sound Absorption / Gewichteter Schallabsorptionskoeffizient/ Clasificación de Absorción de Sonido / Coefficient d'absorption acoustique / Waarde geluidsabsorptie / Valutazione dell'assorbimento acustico	α _w 0.20 (EN ISO 11654)
Sound Absorption / Schallabsorptionsgrad / Absorción de Sonido / Absorption acoustique / Geluidsabsorptie / Assorbimento acustico	

125Hz	250Hz	500Hz	1000Hz	2000Hz	4000Hz	(EN ISO 354)
-0.02	0.06	0.08	0.20	0.34	0.40	α _s

Style	600U	4m ² - 16 tiles per box (25 x 100 cm ± 0.2%)
--------------	------	---

			
DOP: 1037/130371	DOP: 1037/130371		
EN 14041:2004 Notified Body - 0493	EN 14041:2004 Approved Body - 8515		
COC 0493 – CPR – 0181	COC 8515 – CPR – 0181		
For use as floor covering in buildings	For use as floor covering in buildings		
		≥ 2.7	≥ 2.4

					
--	---	---	---	---	---


E615







Product Definition	Tufted Patterned Structured Loop Pile	
Konstruktion	Tuftgemusterte strukturierte Schlingenqualität	
Descripción	Moqueta modular tufting bucle estructurado con diseño	
Description	Dalle de moquette à velours tufté bouclé structuré à motifs	
Type	Getufte gedessineerde gestructureerde bouclé	
Descrizione	Bouclé tufted strutturato	
Pile Material	100% Recycled Solution Dyed Nylon	
Polfasermaterial	100% recyceltes Polyamid garnefärbt	
Composición Fibra	100% Poliamida reciclada tintada en masa	
Composition	Polyamide 100% recyclé teint en masse	
Poolmateriaal	100% Solution Dyed Gerecycled Polyamide	
Fibra	100% Poliammide tinta in massa riciclata	
Pile Yarn Weight / Poleinsatzgewicht / Peso Fibra / Poids de fibre / Poolinzetgewicht / Peso Felpa	814 g/m ² ± 5%	
Total Weight / Gesamtgewicht / Peso Total / Poids total / Totaalgewicht / Peso Totale	3992 g/m ² ± 5%	
Pile Height / Polschichtdicke / Altura Fibra / Hauteur de la fibre / Poolhoogte / Altezza Felpa	4.7 mm + 15% / - 10%	
Total Thickness / Gesamtdicke / Espesor Total / Epaisseur totale / Totale dikte / Altezza Totale	7.9 mm ± 0.5 mm	
Gauge/Ends 10 cm / Teilung x 10 cm / Galga x10 cm / Gauge-Rangs par 10 cm / Rijen per 10 cm / Serraggio x 10 cm	1/10 - 39.4	
Tufts per m² / Noppenzahl/m ² / Puntadas m ² / Densité du tuft par m ² / Aantal noppen per m ² / Densità Punti	176,894 ± 5%	
Backing Type / Rückenkonstruktion / Soporte / Sous-couche / Ruguitvoering / Sottofondo	CQuest™Bio	
Wear Classification / Beanspruchungsklasse / Clasificación al tráfico / Classement d'usage et de confort / Gebruiksintensiteit / Resistenza all'usura	Heavy Contract (EN 1307) Class 33 / LC2	

Radiant Panel /Schwerentflammbarkeit / Clasificación Al Fuego / Classement feu / De Radiant Panel Test / Valutazione delle proprietà ignifughe	(EN ISO 9239-1) Euroclass Bfl s1 (EN 13501-1)
Dimensional Stability / Dimensionsstabilität / Estabilidad Dimensional / Stabilité dimensionnelle / Dimensionele stabiliteit / Test Stabilità dimensionale	≤ 0.2% (EN 986)
Impact Sound Insulation (ΔL_w) / Trittschallverbesserungsmaß / Impacto Aislamiento Acústico / Réduction du bruit d'impact /Contactgeluid absorptie / Isolamento all'impatto acustico	27 dB (EN ISO 10140-3)
Rating of Sound Absorption / Gewichteter Schallabsorptionskoeffizient/ Clasificación de Absorción de Sonido / Coefficient d'absorption acoustique / Waarde geluidsabsorptie / Valutazione dell'assorbimento acustico	α _w 0.20 (EN ISO 11654)
Sound Absorption / Schallabsorptionsgrad / Absorción de Sonido / Absorption acoustique / Geluidsabsorptie / Assorbimento acustico	

125Hz	250Hz	500Hz	1000Hz	2000Hz	4000Hz	(EN ISO 354)
-0.02	0.06	0.08	0.20	0.34	0.40	α _s

Style	600V	4m ² - 16 tiles per box (25 x 100 cm ± 0.2%)
--------------	------	---

			
DOP: 1037/130372	DOP: 1037/130372		
EN 14041:2004 Notified Body - 0493	EN 14041:2004 Approved Body - 8515		
COC 0493 – CPR – 0181	COC 8515 – CPR – 0181		
For use as floor covering in buildings	For use as floor covering in buildings		
		≥ 2.7	≥ 2.4

					
---	---	---	---	---	---













E616

Product Definition	Tufted Patterned Structured Loop Pile	
Konstruktion	Tuftgemusterte strukturierte Schlingenqualität	
Descripción	Moqueta modular tufting bucle estructurado con diseño	
Description	Dalle de moquette à velours tufté bouclé structuré à motifs	
Type	Getufte gedessineerde gestructureerde bouclé	
Descrizione	Bouclé tufted strutturato	
Pile Material	100% Recycled Solution Dyed Nylon	
Polfasermaterial	100% recyceltes Polyamid garnefärbt	
Composición Fibra	100% Poliamida reciclada tintada en masa	
Composition	Polyamide 100% recyclé teint en masse	
Poolmateriaal	100% Solution Dyed Gerecycled Polyamide	
Fibra	100% Poliammide tinta in massa riciclata	
Pile Yarn Weight / Poleinsatzgewicht / Peso Fibra / Poids de fibre / Poolinzetgewicht / Peso Felpa	610 g/m ² ± 5%	
Total Weight / Gesamtgewicht / Peso Total / Poids total / Totaalgewicht / Peso Totale	4054 g/m ² ± 5%	
Pile Height / Polschichtdicke / Altura Fibra / Hauteur de la fibre / Poolhoogte / Altezza Felpa	3.1 mm + 15% / - 10%	
Total Thickness / Gesamtdicke / Espesor Total / Epaisseur totale / Totale dikte / Altezza Totale	6.7 mm ± 0.5 mm	
Gauge/Ends 10 cm / Teilung x 10 cm / Galga x10 cm / Gauge-Rangs par 10 cm / Rijen per 10 cm / Serraggio x 10 cm	1/12 - 47.2	
Tufts per m² / Noppenzahl/m ² / Puntadas m ² / Densité du tuft par m ² / Aantal noppen per m ² / Densità Punti	159,579 ± 5%	
Backing Type / Rückenkonstruktion / Soporte / Sous-couche / Ruguitvoering / Sottofondo	CQuest™Bio	
Wear Classification / Beanspruchungsklasse / Clasificación al tráfico / Classement d'usage et de confort / Gebruiksintensiteit / Resistenza all'usura	Heavy Contract (EN 1307) Class 33 / LC1	

Radiant Panel /Schwerentflammbarkeit / Clasificación Al Fuego / Classement feu / De Radiant Panel Test / Valutazione delle proprietà ignifughe	(EN ISO 9239-1) Euroclass Bfl s1 (EN 13501-1)
Dimensional Stability / Dimensionsstabilität / Estabilidad Dimensional / Stabilité dimensionnelle / Dimensionele stabiliteit / Test Stabilità dimensionale	≤ 0.2% (EN 986)
Impact Sound Insulation (ΔL_w) / Trittschallverbesserungsmaß / Impacto Aislamiento Acústico / Réduction du bruit d'impact /Contactgeluid absorptie / Isolamento all'impatto acustico	23 dB (EN ISO 10140-3)
Rating of Sound Absorption / Gewichteter Schallabsorptionskoeffizient/ Clasificación de Absorción de Sonido / Coefficient d'absorption acoustique / Waarde geluidsabsorptie / Valutazione dell'assorbimento acustico	α _w 0.20 (EN ISO 11654)
Sound Absorption / Schallabsorptionsgrad / Absorción de Sonido / Absorption acoustique / Geluidsabsorptie / Assorbimento acustico	

125Hz	250Hz	500Hz	1000Hz	2000Hz	4000Hz	(EN ISO 354)
0.04	0.02	0.08	0.19	0.34	0.43	α _s

Style	600W	5m ² - 20 tiles per box (25 x 100 cm ± 0.2%)
--------------	------	---

			
DOP: 1037/130373	DOP: 1037/130373		
EN 14041:2004 Notified Body - 0493	EN 14041:2004 Approved Body - 8515		
COC 0493 – CPR – 0181	COC 8515 – CPR – 0181		
For use as floor covering in buildings	For use as floor covering in buildings		
		≥ 2.7	≥ 2.4

					
---	---	---	---	---	---

EN Interface European Manufacturing BV reserves the right to change or modify specifications. Please see website for latest specifications. We have tried our very best to accurately represent product colours. However, due to the nature of printed materials, colour of actual products may vary slightly. Please request a sample to see actual product colour.

DE Interface European Manufacturing BV behält sich das Recht vor, Produktspezifikationen zu ändern oder entsprechend anzupassen. Die aktuellsten technischen Spezifikationen finden Sie auf unserer Website. Wir versuchen die Farben so naturgetreu wie möglich wiederzugeben. Farbabweichungen lassen sich jedoch nicht ausschließen. Bitte fordern Sie ein Muster an, um sich von der tatsächlichen Farbe zu überzeugen.

ES Interface European Manufacturing BV se reserva el derecho a modificar las especificaciones arriba referenciadas. Por favor, consulta nuestra web para ver las últimas especificaciones. Hemos intentado representar con la máxima precisión posible los Coloures del producto. Sin embargo, debido a la naturaleza de los materiales impresos, el Colour de los productos reales puede variar ligeramente. Por favor, solicita una muestra para ver el Colour real del producto.

FR Interface European Manufacturing BV se réserve la possibilité de modifier les caractéristiques ci-dessus. Les caractéristiques techniques à jour sont consultables sur le site internet. Les couleurs présentées se rapprochent au maximum des Coloures réels. Toutefois, les procédés d'impression des matériaux peuvent entrainer une légère variation du Colouris. Merci de demander un échantillon pour constater la couleur des produits.

NL Interface European Manufacturing BV behoudt zich het recht voor de specificaties te allen tijde aan te passen. Zie de website voor de nieuwste specificaties. Wij hebben getracht de productkleuren zo goed mogelijk te reproduceren. De kleuren van geprint materiaal kunnen echter altijd enigszins afwijken. Vraag altijd stalenmateriaal aan om de daadwerkelijke kleur te beoordelen.

SE Vi har gjort vårt bästa för att representera korrekta produktfärger. Emellertid, på grund av typen av tryckt material, kan färgen på faktiska produkter variera något. Beställ gärna ett prov för att se aktuell produktfärg.

Europe, Middle East & Africa

AE	+971 44508175
AT	+43 1 8102839
BA	+387 33 522 534
BE	+32 2 475 27 27
BG	+359 2 808 303
BY	+375 17 226 75 14
CH	+41 44 913 68 00
CZ	+42 0 233 087 111
DE	+49 2151 3718 0
DK	+45 33 79 70 55
EE	+372 6518 313
ES	+34 932 418 750
EG	+(202) 3760 7818
FR	+33 1 58 10 20 20
GR	+30 211 2120820
HR	+385 14 62 30 63
HU	+36 1 349 6545
IE	+353 1 679 8466
IL	+972 97403034
IT	+39 02 890 93678
KZ	+7 701 391 88 13
LT	+370 37 337332
LV	+371 672 18 744
NL	+31 33 277 5555
ME	+381 11 414 92 00
MK	+389 2 323 01 89
NO	+47 23 12 01 70
PL	+48 22 862 48 40
PT	+351 217 122 740
RO	+40 21 317 12 40/42/43/44
RS	+381 11 414 92 00
SA	+966 554622263
SE	+468 241 230
SK	+421 911 104 073
SI	+386 8 205 4007
TR	+ 90 212 248 97 77
UA	+38(044)238 27 67
UK	+44 (0)800 3134465
ZA	+27 11 608 4270